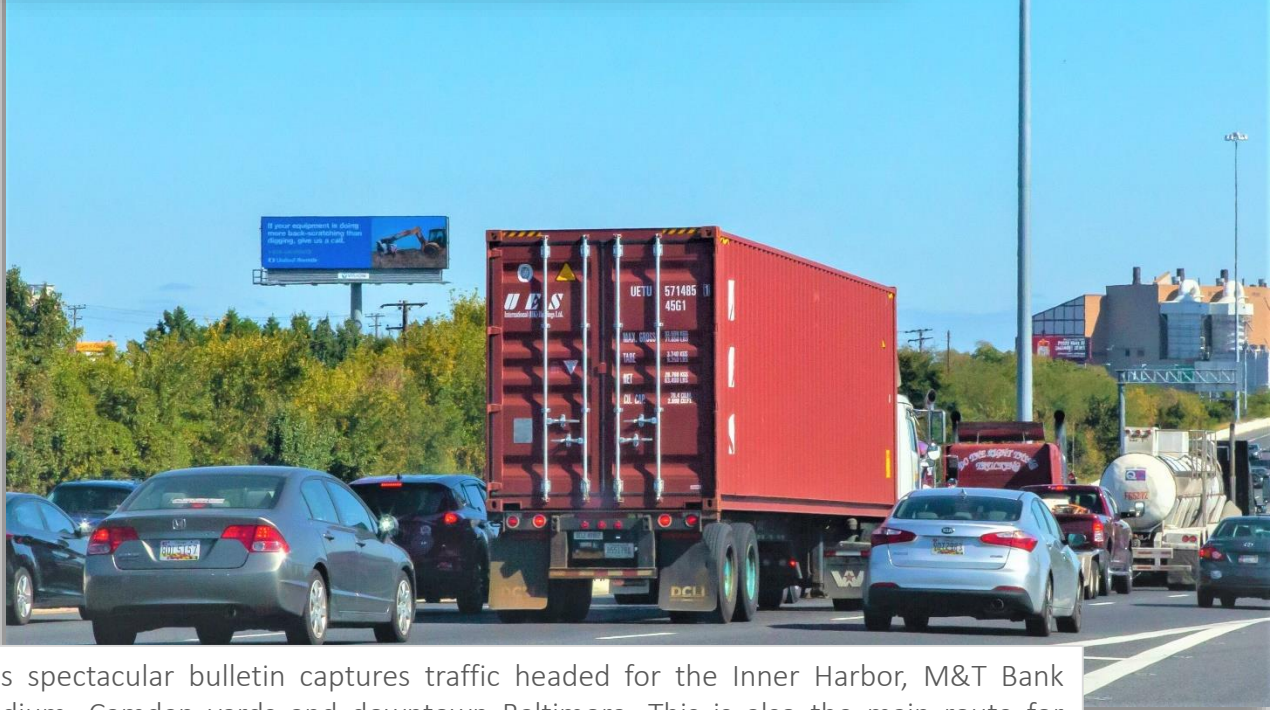


# MD1605: I-95 N

Southwest Baltimore: 2475 ft. West of Russel St., Facing South



This spectacular bulletin captures traffic headed for the Inner Harbor, M&T Bank Stadium, Camden yards and downtown Baltimore. This is also the main route for travelers headed north to Delaware, Philadelphia, and New Jersey.

Size:	14'H x 48'W
Materials:	Digital
Facing:	South
Illumination:	Yes
Weekly Impressions:	328,969
LAT:	39.271274
LONG:	-76.641832
TAB ID:	30809631

